



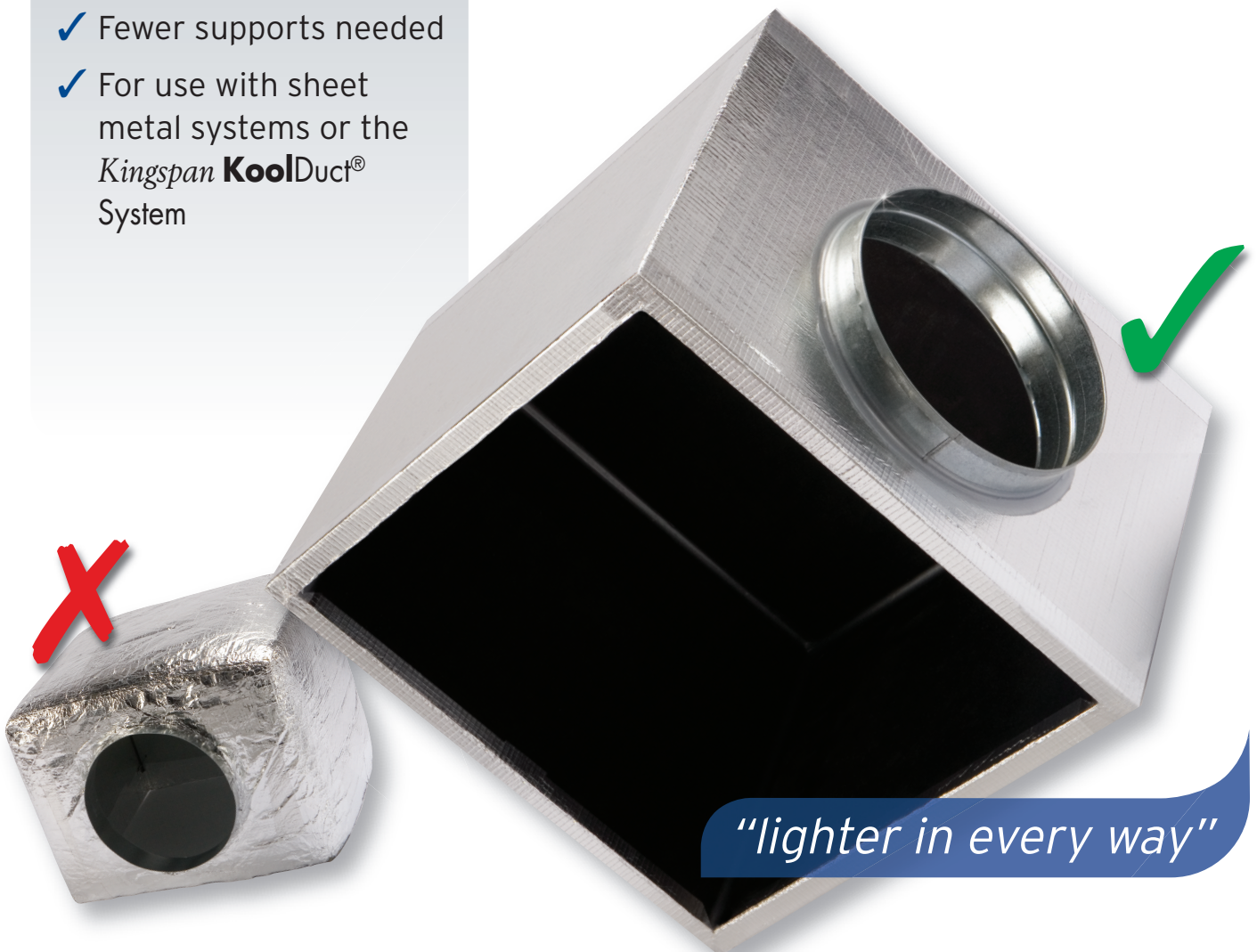
Kingspan[®]

Low Energy -
Low Carbon Buildings

- ✓ Cost savings of up to 30%*
- ✓ No lagging required
- ✓ Lightweight & Easy to Install
- ✓ Faster installation
- ✓ Fewer supports needed
- ✓ For use with sheet metal systems or the *Kingspan KoolDuct*[®] System

Value Engineered Solutions

Kingspan **KoolDuct**[®] Pre-insulated Plenum Boxes



If you would like Kingspan Insulation to contact you with further information call 01544 388 601 or info@kingspaninsulation.co.uk